

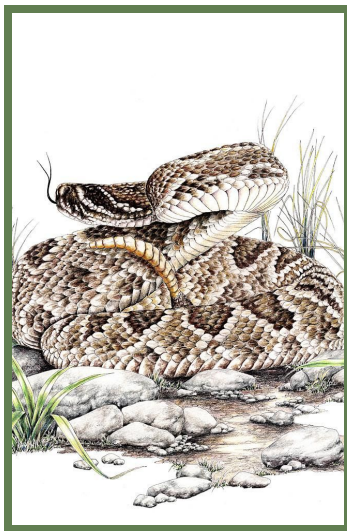
# 20% OFF

# Rattlesnake

# Vaccines

*(For the month of April)*

*Rattlesnake Season  
Is Coming...*



Less than 25 lbs require a total of 3 rattlesnake vaccines given 3-4 weeks apart (then yearly thereafter).

Between 26-99 lbs require only 2 rattlesnake vaccines given 3-4 weeks apart (then yearly thereafter).

100 + lbs require a total of 3 rattlesnake vaccines given 3-4 weeks apart (then yearly thereafter).

**\*You do not have to make an appointment for the rattlesnake vaccine if your pet has a current annual examination. If you have any questions about rattlesnake vaccines and/or need an annual exam please call us at:**

**#760-345-8227**



## **Rattlesnake Season April-October**

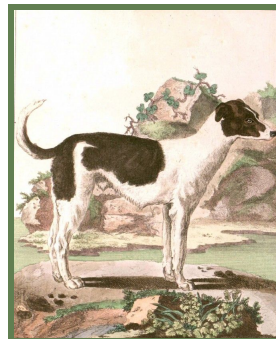
If you hike with your pet on our local trails, or let your pet run in desert regions for exercise, you may want to have them vaccinated. Rattlesnake bites can be fatal and a rattlesnake bite is always an emergency.

## **Purpose of a Rattlesnake Vaccine**

The purpose of a rattlesnake vaccine is to lessen the severity of the pet's symptoms to a rattlesnake bite. The vaccine does this by building immunity to the snake's venom.

Any pet bitten by a rattlesnake will still need to be seen as soon as possible by a Veterinarian to determine the proper treatment. A pet bitten by

a rattlesnake can get skin infections, have severe tissue swelling, and tissue damage that needs to be managed medically.



## **Vaccine Details**

If a pet has NOT had the rattlesnake series before, OR the pet has missed more than a year, he or she will need the recommended 2-3 vaccine series depending on weight. Small and large dogs require a series of 3 vaccines. Dogs between 26-99 lbs require only 2 vaccines. The rattlesnake series can be started as early as 4 months old.

Vaccine Side effects: The most common side effect is an injection site swelling (Only reported in less than 0.25% of cases) This is non painful and typically self resolving. Otherwise a lesser side effect would be vomiting or diarrhea.